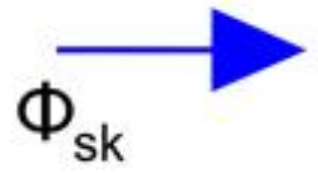
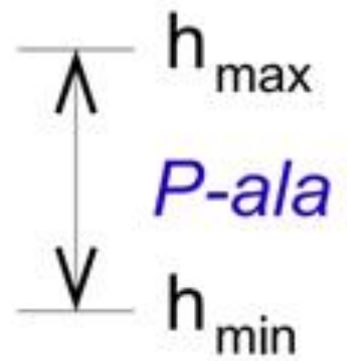
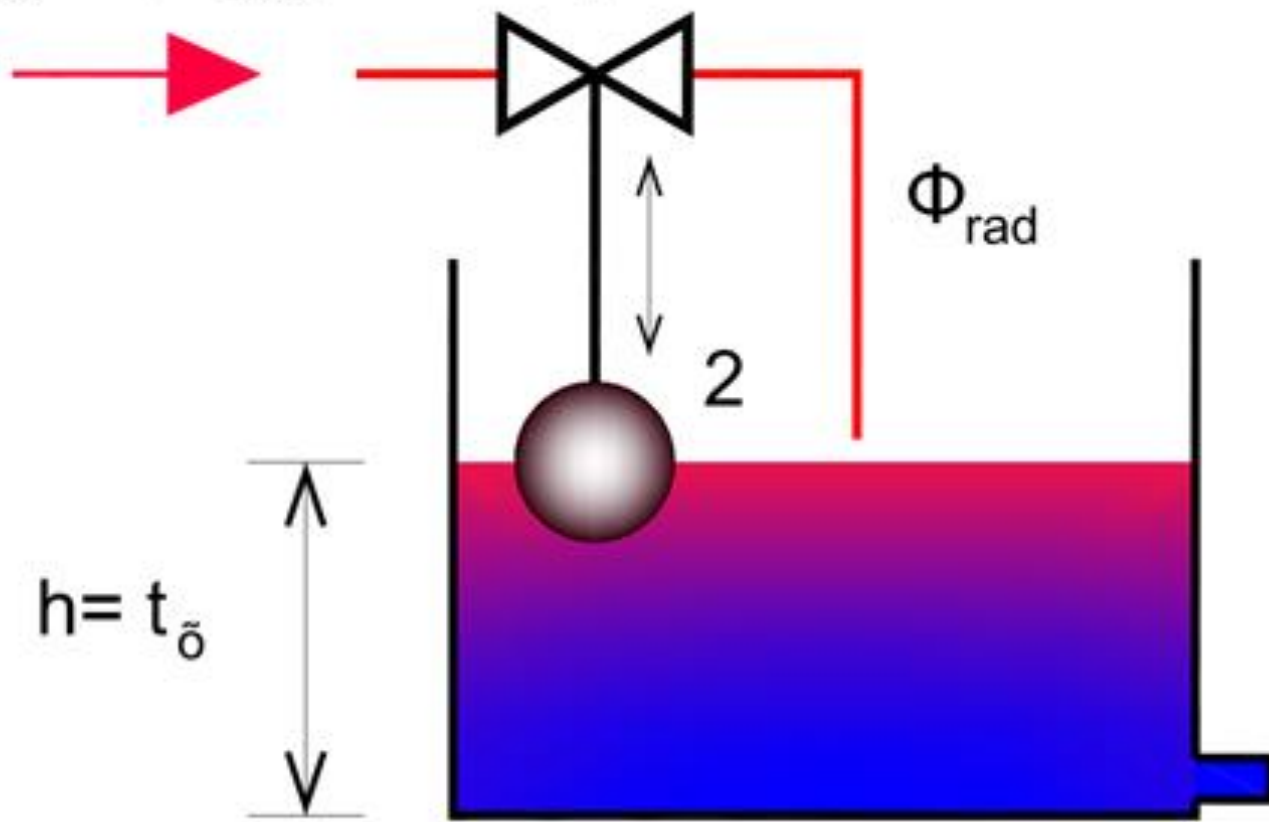
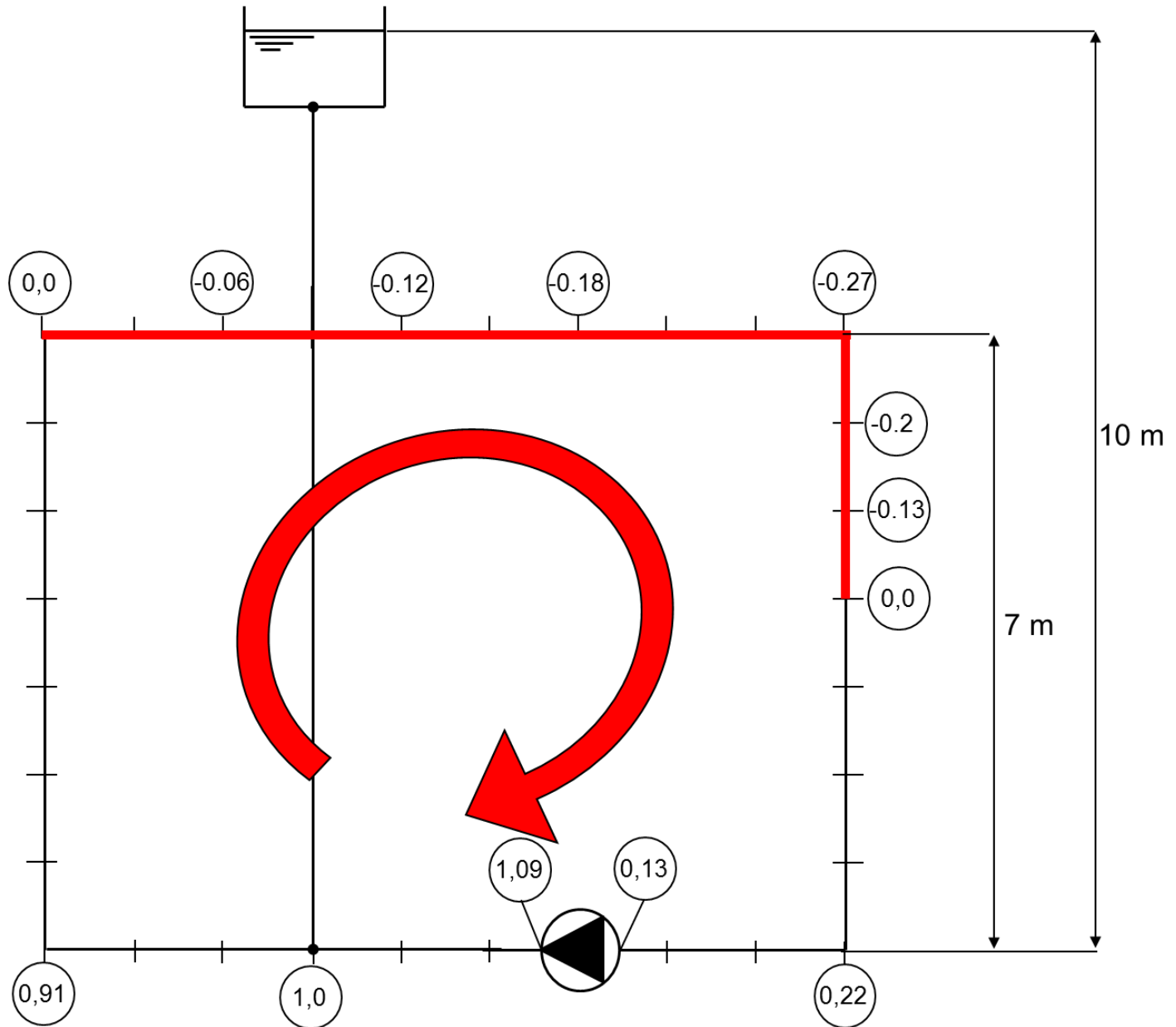


Hoonete küte_2013

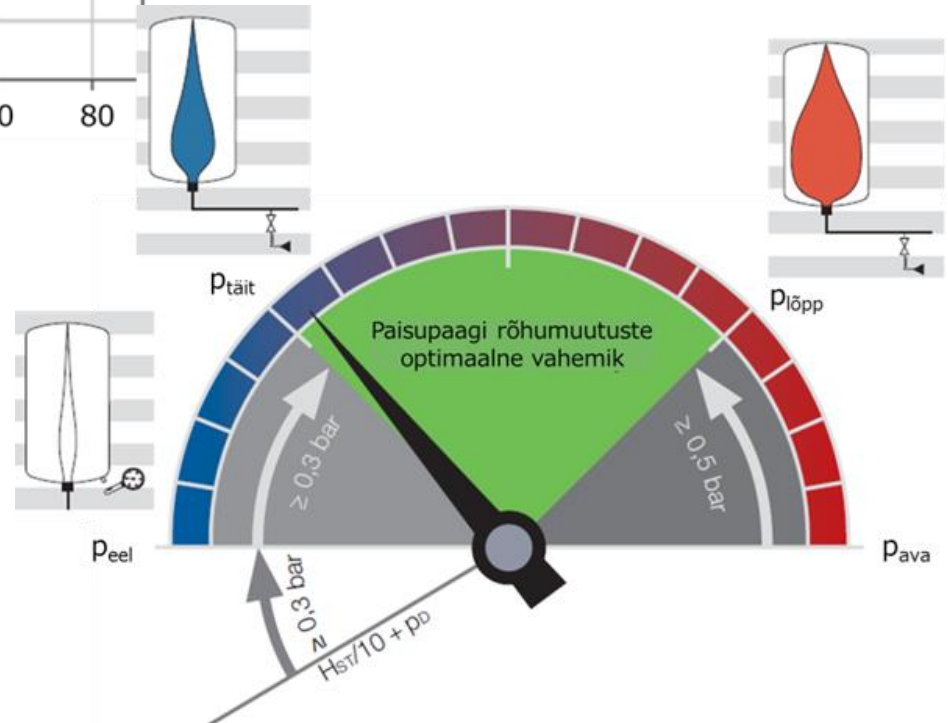
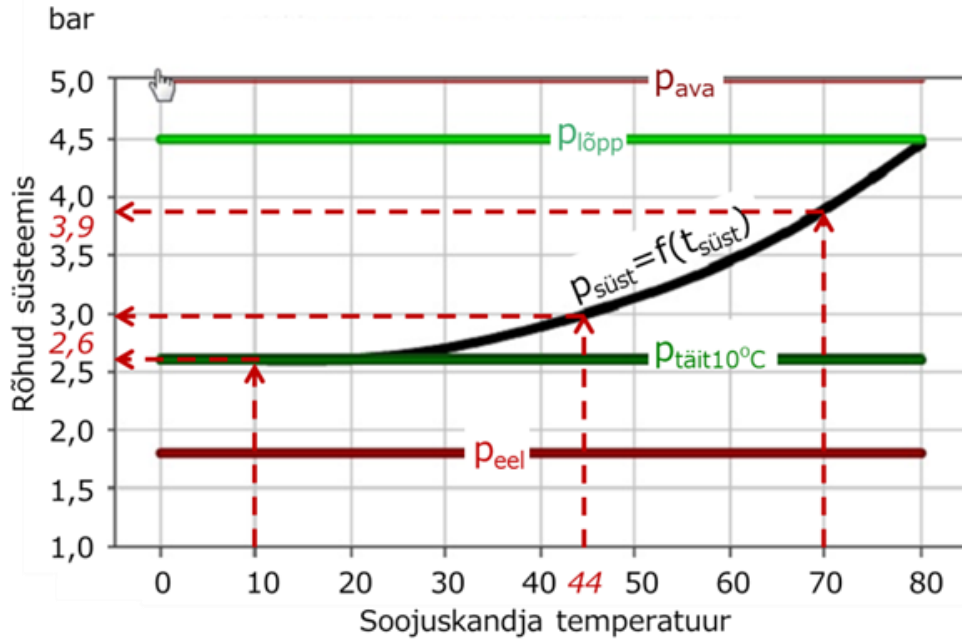
$$\Phi_{\text{rad}} = f(G_{\text{rad}})$$



Hoonete küte_2013

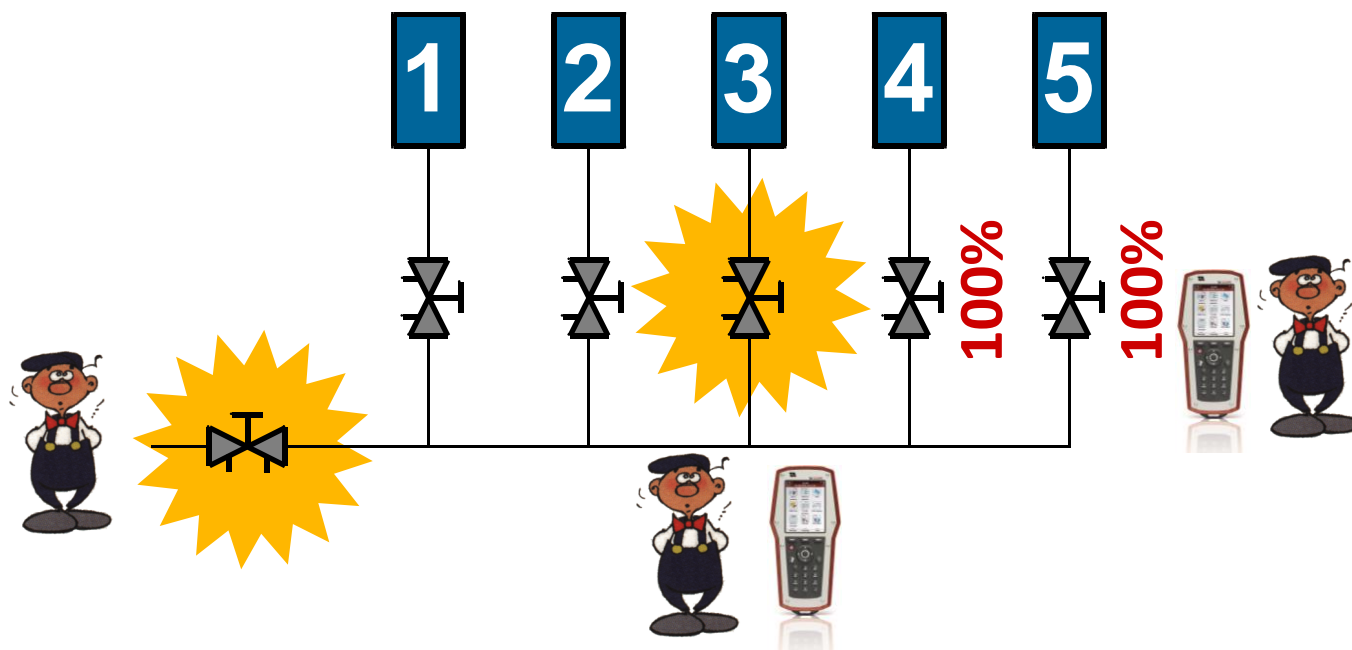


Hoonete küte_2013



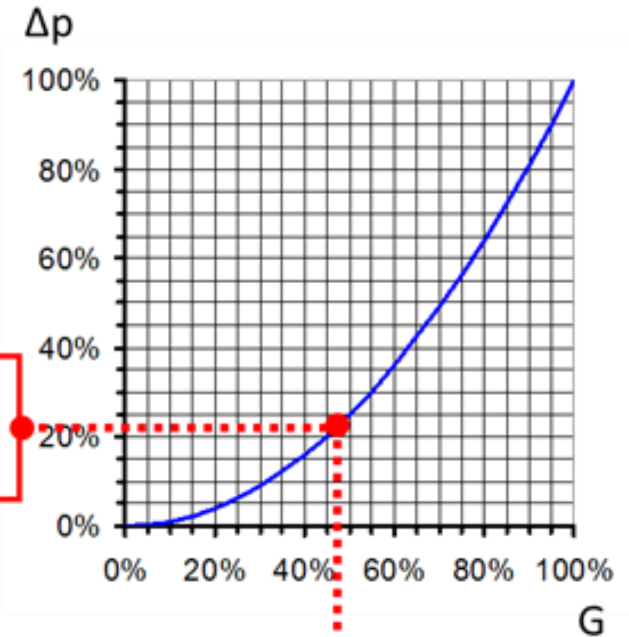
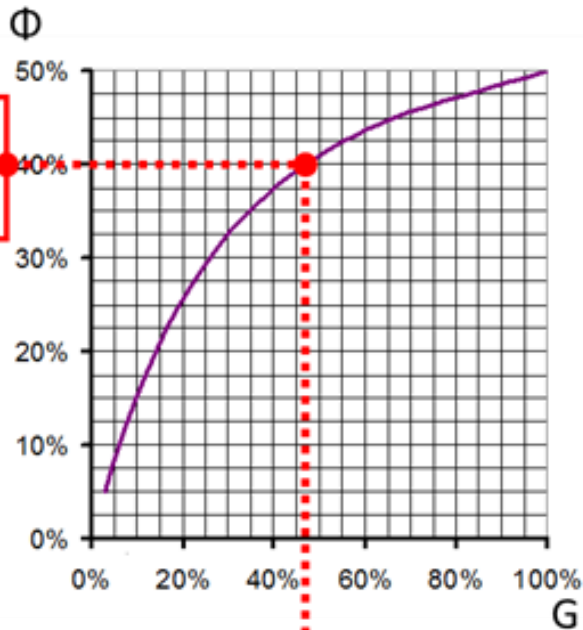
Hoonete küte_2013

Kompensatsioonimeetod



Tasakaalustusprotseduur jätkub TKV-ga 3. Võrdlusventiilis ja TKV-s 4 taastatakse arvutuslikud vooluhulgad tänu proportsionaalsusseadusele ühe käeliigutusega

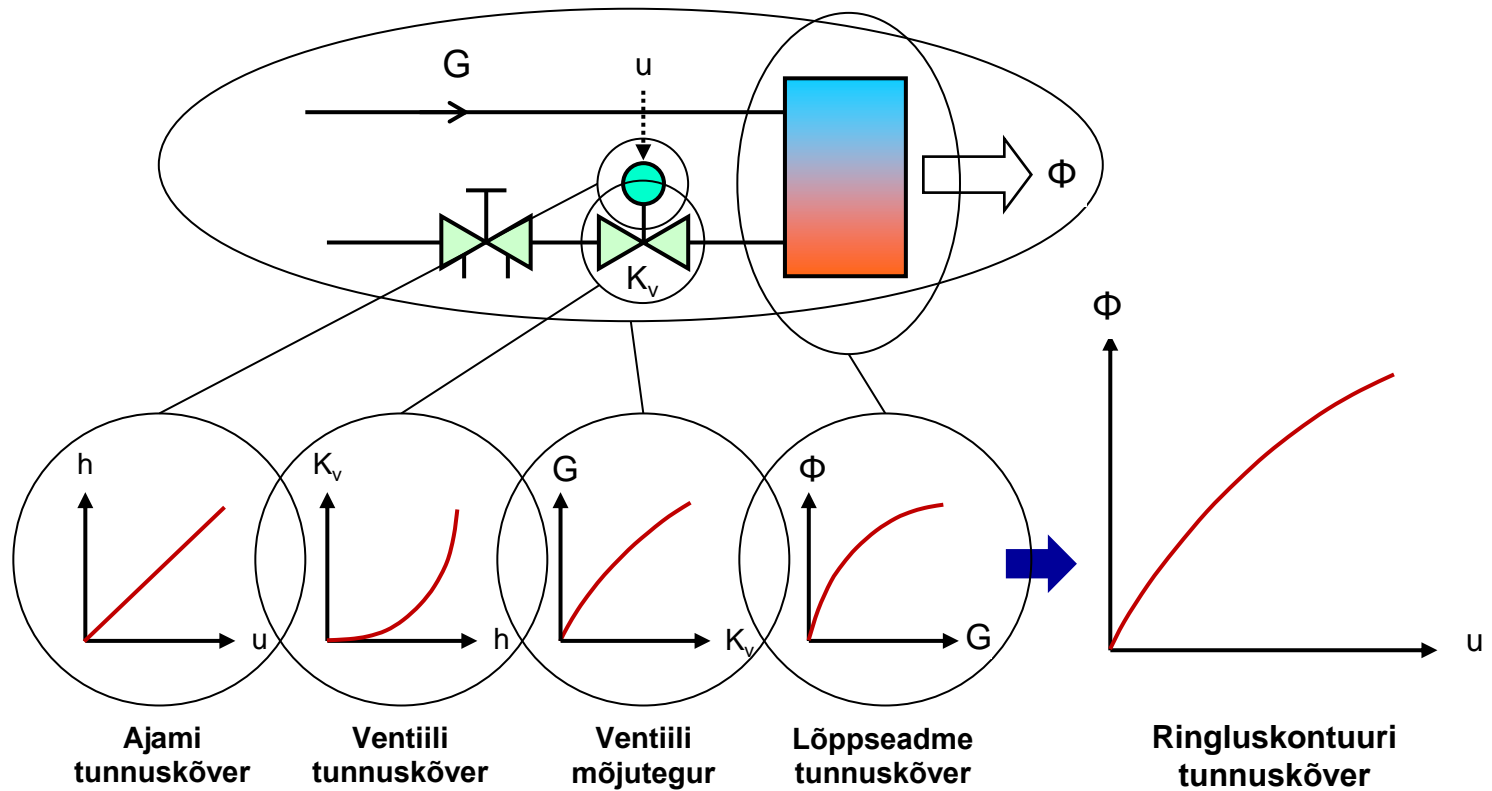
Hoonete küte_2013



50%-sele võimsusele vastav pealevoolutemperatuur

47%
vooluhulgast

Hoonete küte_2013



Hoonete küte_2013

